



## 1905 Stone Myers Parkway

Grapevine, Texas 76051

### Property Features

- New Construction - Class A Office Space
- Open Floor Plan With Exposed Ceilings
- 1 Grade Level Door With Warehouse
- Building Signage
- Close Proximity to DFW Airport and Highways 114, 121 and 360.



**Colt Power, SIOR, CCIM**

817 872 3905  
cpower@robertlynn.com

**Rob Kearney**

817 872 3912  
rkearney@robertlynn.com



THE INFORMATION CONTAINED HEREIN HAS BEEN GIVEN TO US BY THE OWNER OF THE PROPERTY OR OTHER SOURCES WE DEEM RELIABLE. WE HAVE NO REASON TO DOUBT ITS ACCURACY, BUT WE DO NOT GUARANTEE IT. ALL INFORMATION SHOULD BE VERIFIED PRIOR TO PURCHASE OR LEASE.

1200 Summit Avenue Suite 800  
Fort Worth TX 76102  
817 885 8333

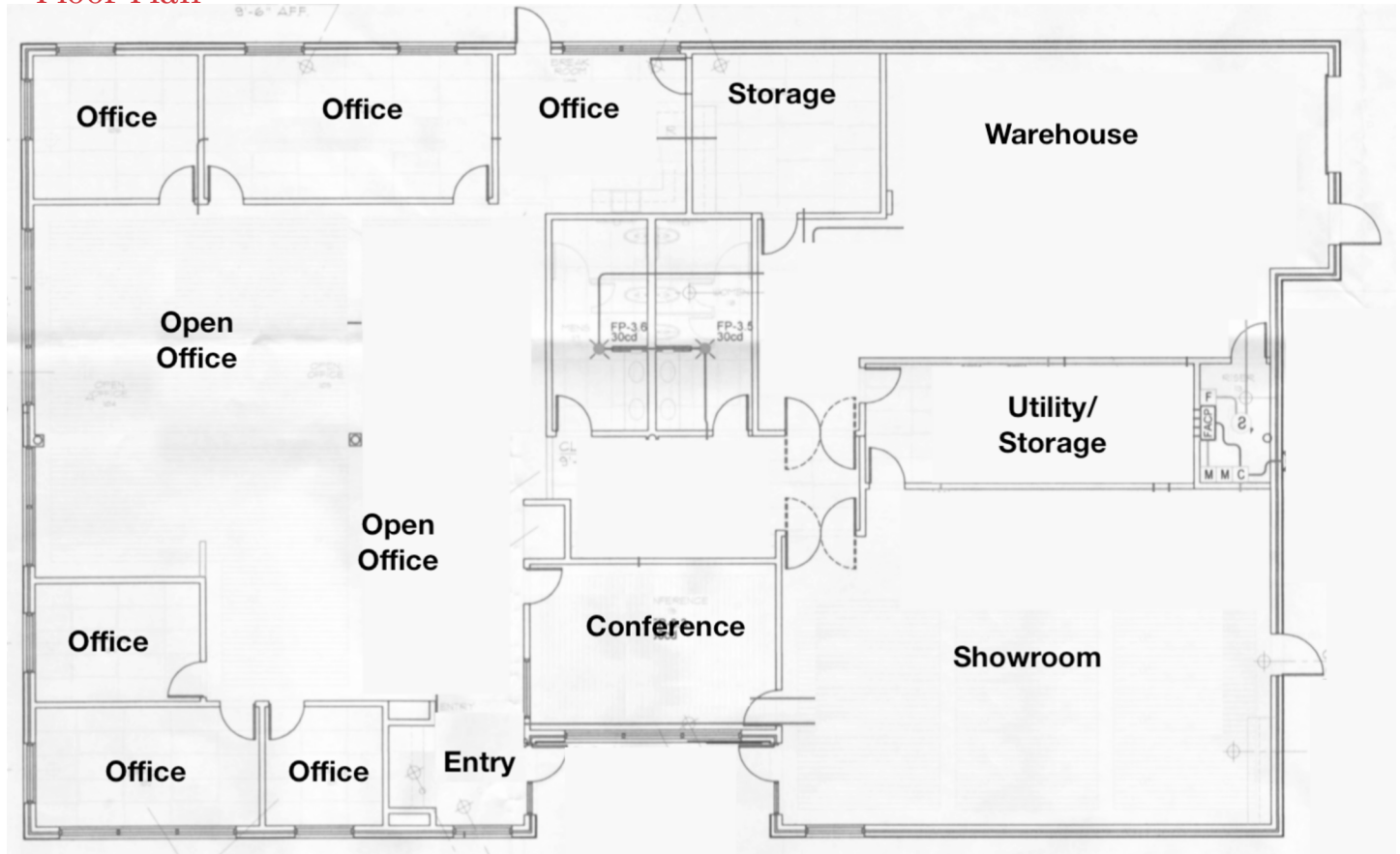
[nairl.com](http://nairl.com)

For Sale  
**7,109 SF**

**1905 Stone Myers Parkway**

Grapevine, Texas 76051

**Floor Plan**





For Sale  
7,109 SF

# 1905 Stone Myers Parkway

Grapevine, Texas 76051

## Site Plan

